

# One Minster Court. New tricks.

Beautifully refurbished.  
Two stylish floors available.  
Up to 20,000 sq ft.

**ONE  
MINSTER  
COURT** LDN EC3







# Bold, striking & iconic.

A city landmark with a unique presence,  
iconic Minster Court brings together an  
impressive community of global brands  
in a highly connected location.



**ONE  
MINSTER  
COURT** LDN EC3





**A landmark famed for its iconic architecture and striking design.**







# We've got a brand new look.

Make a statement with an impressive new reception and benefit from welcoming shared seating areas.

Office floors have been finished to Grade A standards with bespoke lighting and finishes creating a slick and distinctive working environment.



# A stunningly transformed arrival experience.

Step inside from the striking exteriors and you'll be welcomed by a beautifully balanced and inviting interior.

The newly refurbished entrance is finished to the highest standards with a stylish and contemporary design.





# A sophisticated new business lounge.

Benefit from additional space for informal meetings, catching up on emails or with your colleagues in the comfortable new shared lounge, accessed from the reception.



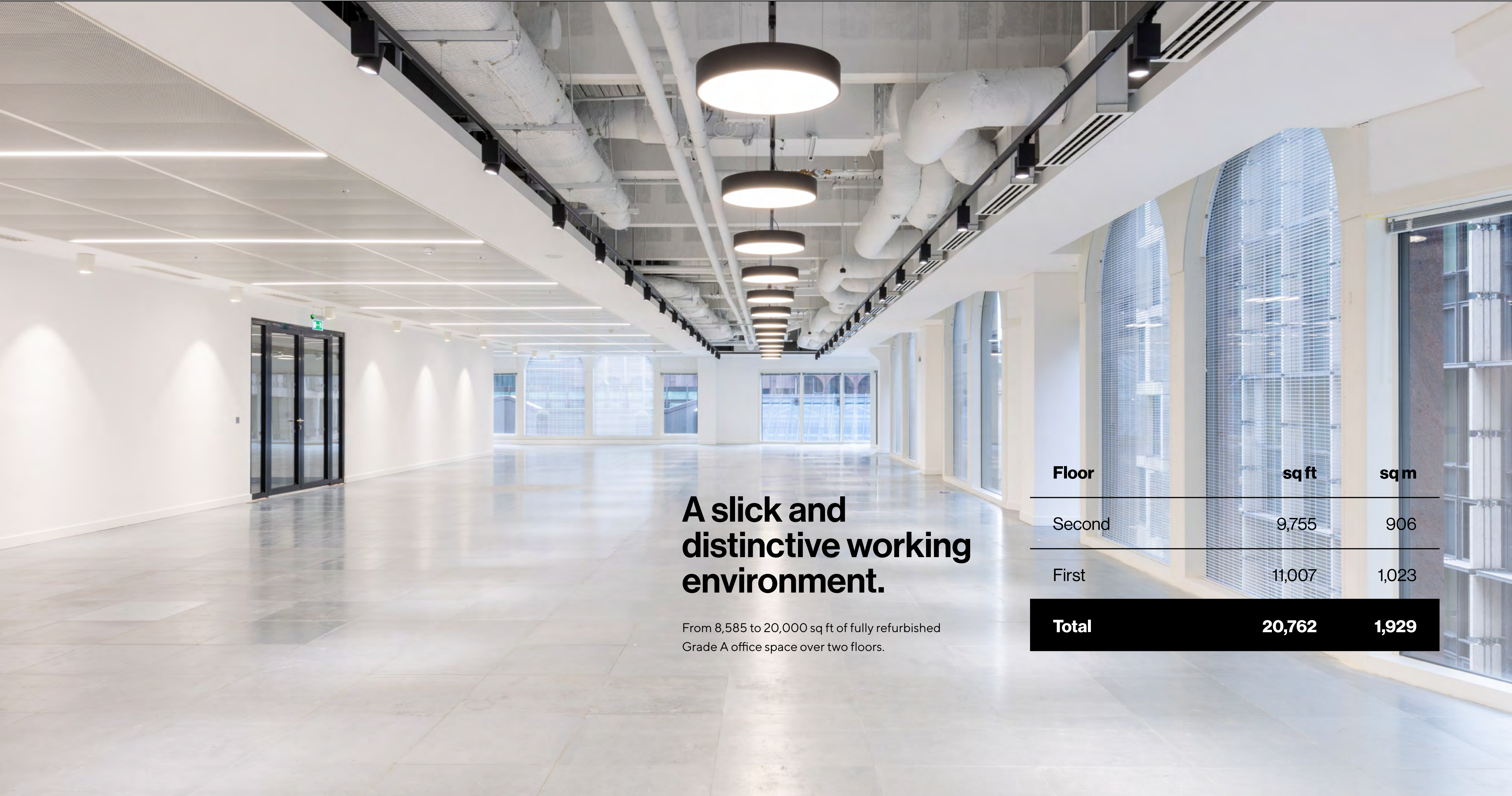


# Introducing corporate-chic office space.

The available floors offer workspace that is bright and flexible with high quality finishes.







# A slick and distinctive working environment.

From 8,585 to 20,000 sq ft of fully refurbished Grade A office space over two floors.

Floor	sq ft	sqm
Second	9,755	906
First	11,007	1,023
Total	20,762	1,929





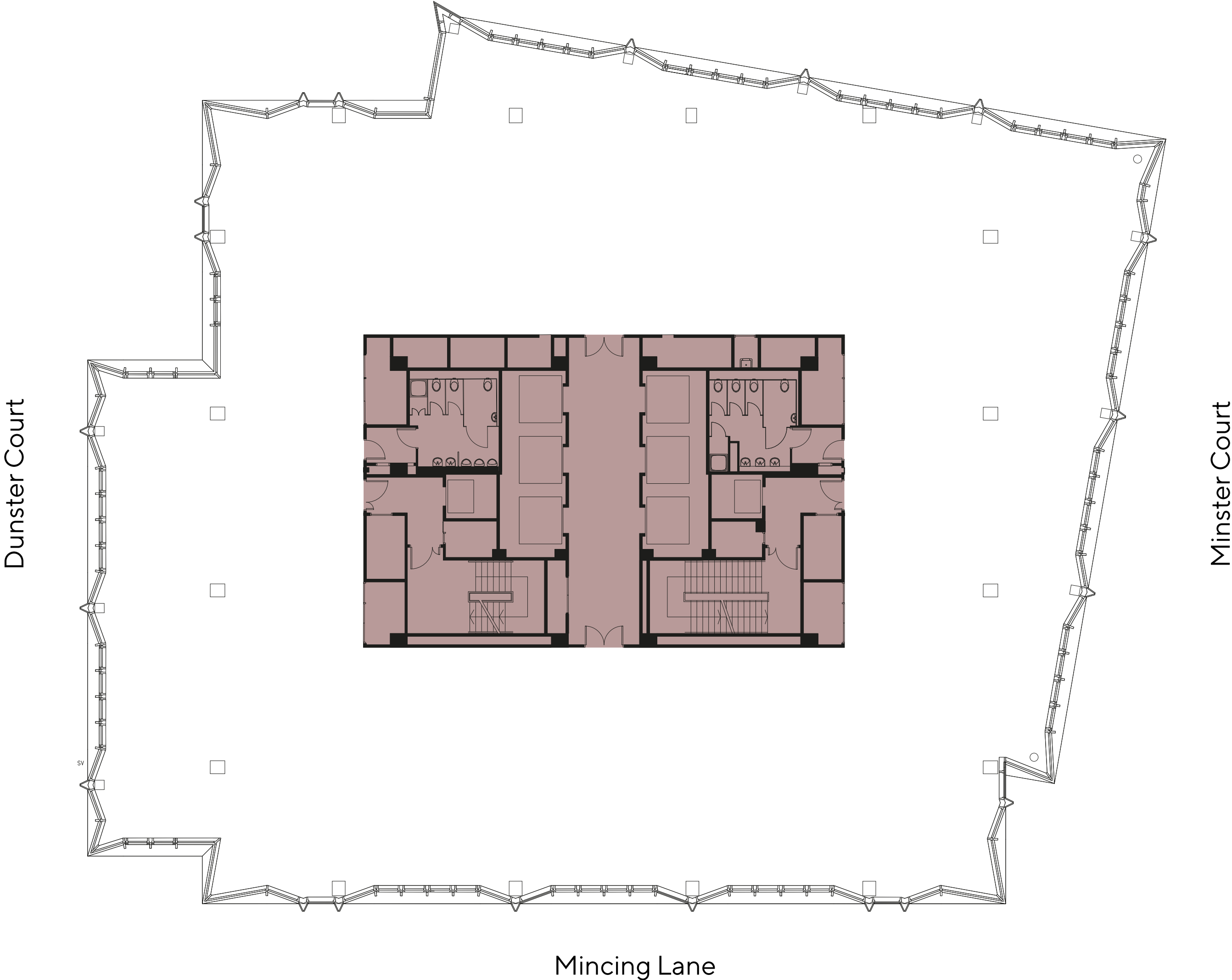
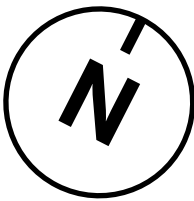


Floorplan

First Floor

11,007 sq ft  
1,023 sq m

Office Space   Core



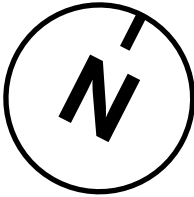


Floorplan

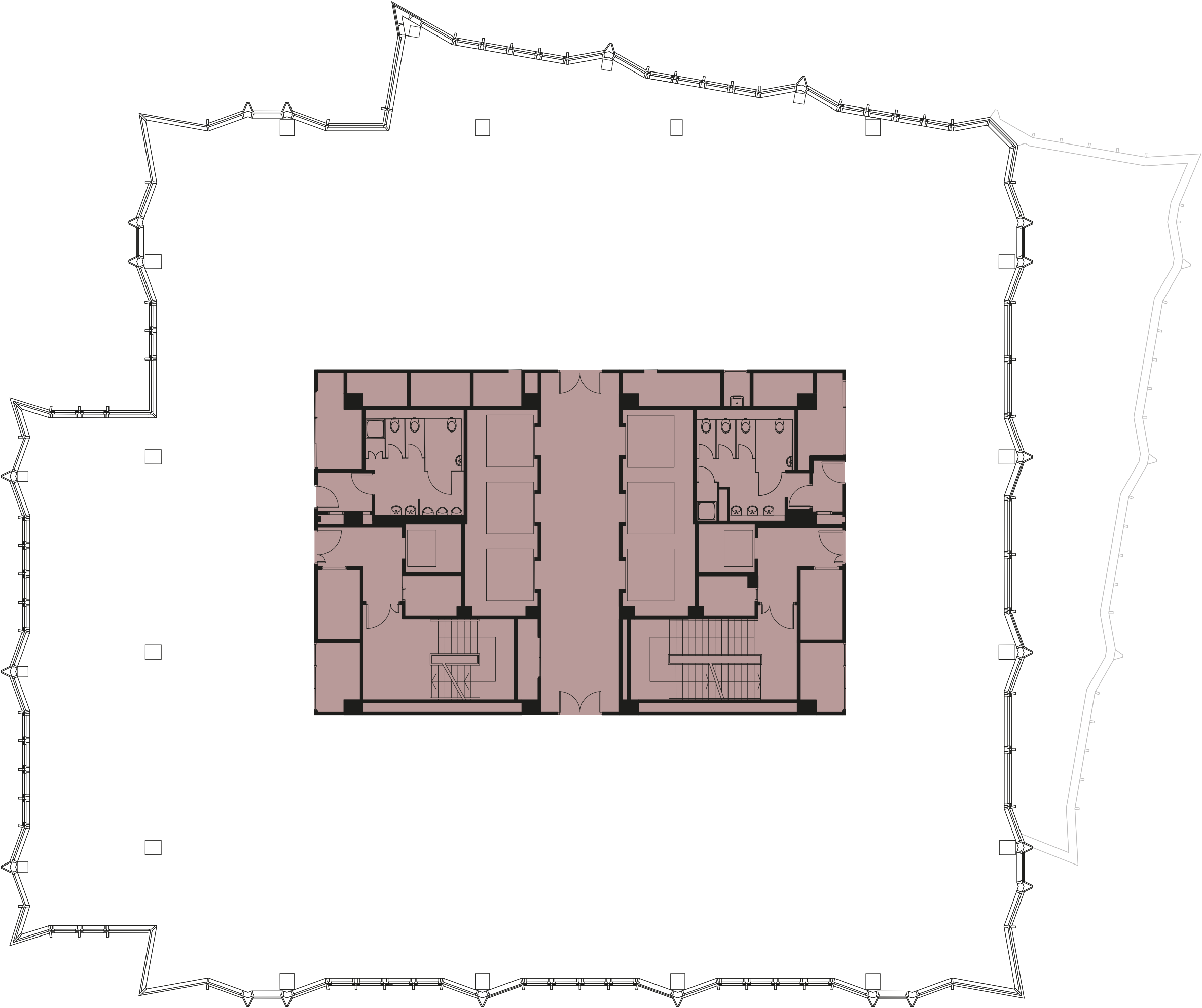
Second Floor

9,755 sq ft  
906 sq m

Office Space   Core



Dunster Court



Minster Court

Mincing Lane





Contemporary finishes to renew and refresh an iconic building.







Corporate Plan

First Floor

11,007 sq ft  
1,023 sq m

- 100

Open plan desks
- 12

Meeting rooms
- 3

Private offices
- 14

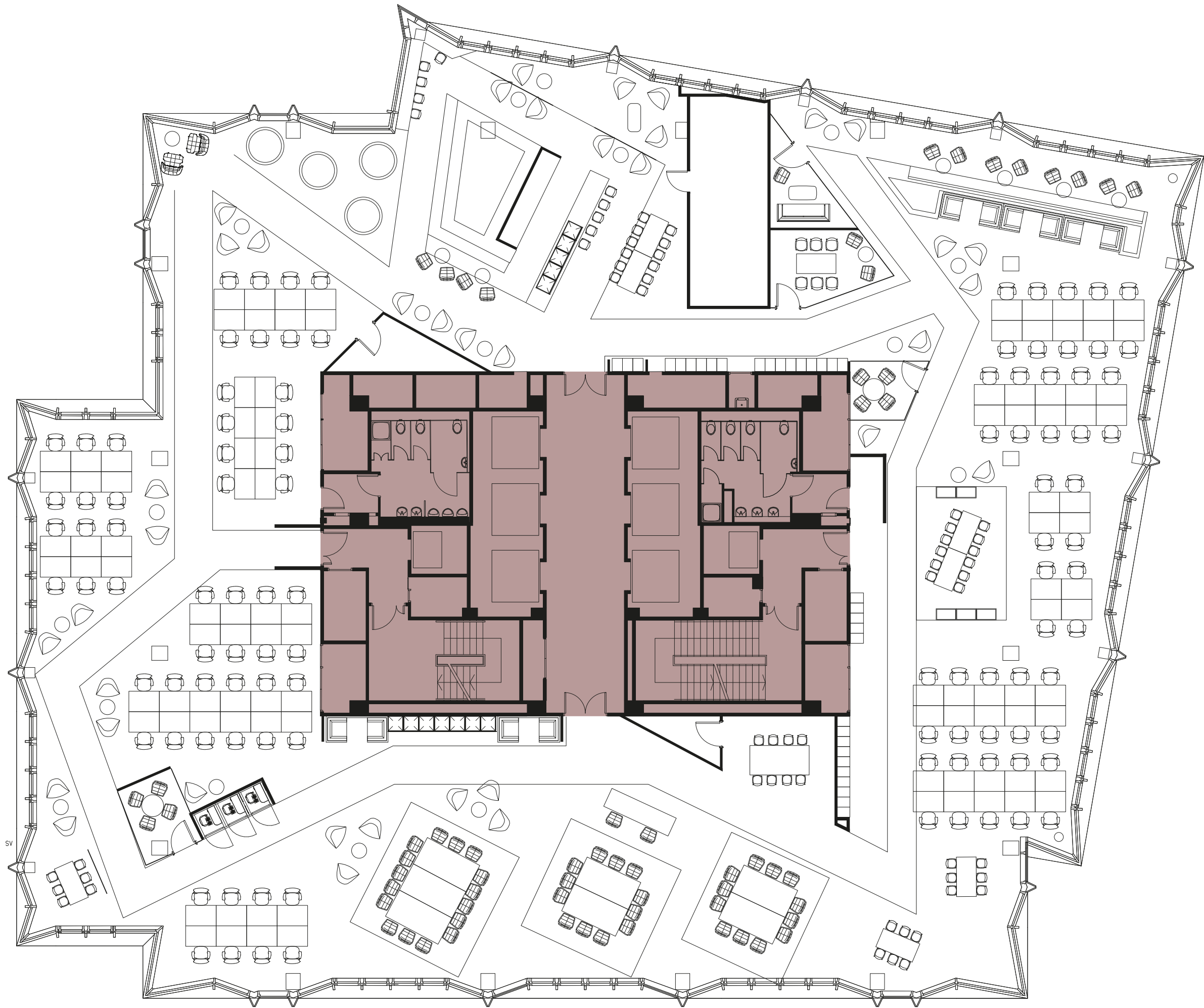
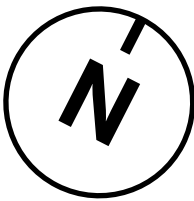
Breakout areas
- 2

Receptions
- 2

Print hubs

Office Space

Core



Mincing Lane



Corporate Plan

Second Floor

9,755 sq ft  
906 sq m

- 94

Open plan desks
- 10

Meeting rooms
- 3

Private offices
- 10

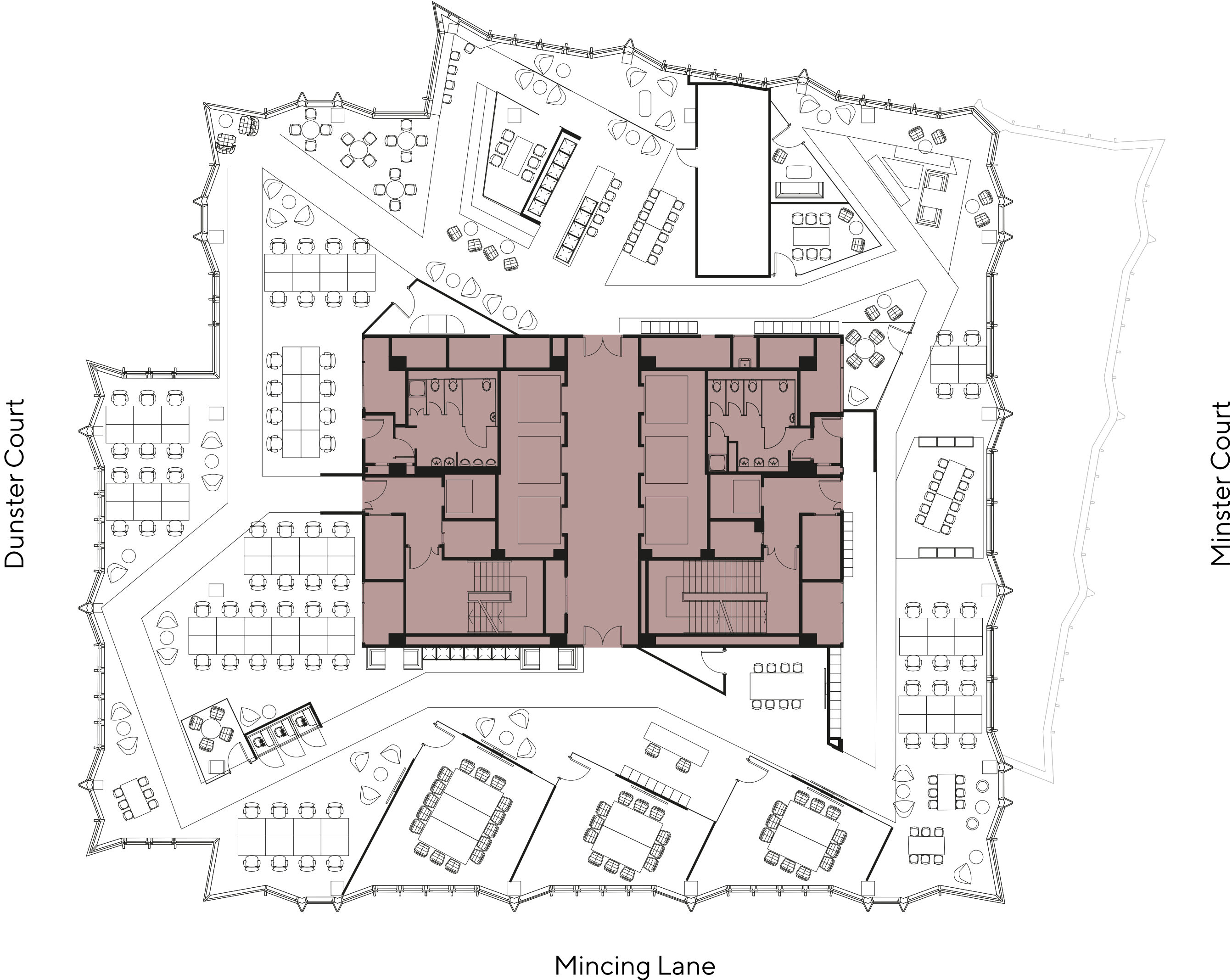
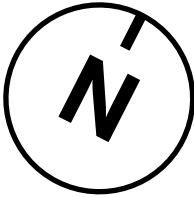
Breakout areas
- 1

Reception
- 2

Print hubs

Office Space

Core







# Refined, refurbished, reimagined.

New contemporary  
reception

New business lounge

New on-floor  
VAV air conditioning

New modular and  
exposed ceiling system

LED lighting

6 x 21 person passenger lifts

Cycle parking and showers

Secure car parking

Tenant standby power





# Spoilt for choice.

From Leadenhall market to St Katharine Docks, enjoy a vast range of amenities in every direction.





Amenities at Minster Court

Whether you're working out at premium fitness club, Third Space, or working through the extensive menu of craft beers at Brewdog, it's all on your doorstep.







East India Arms

From formal  
to fun, inspiring  
to impressive.

The City has evolved and now  
offers a real mix of eateries, bars  
and retail options to explore.



St Katharine Docks

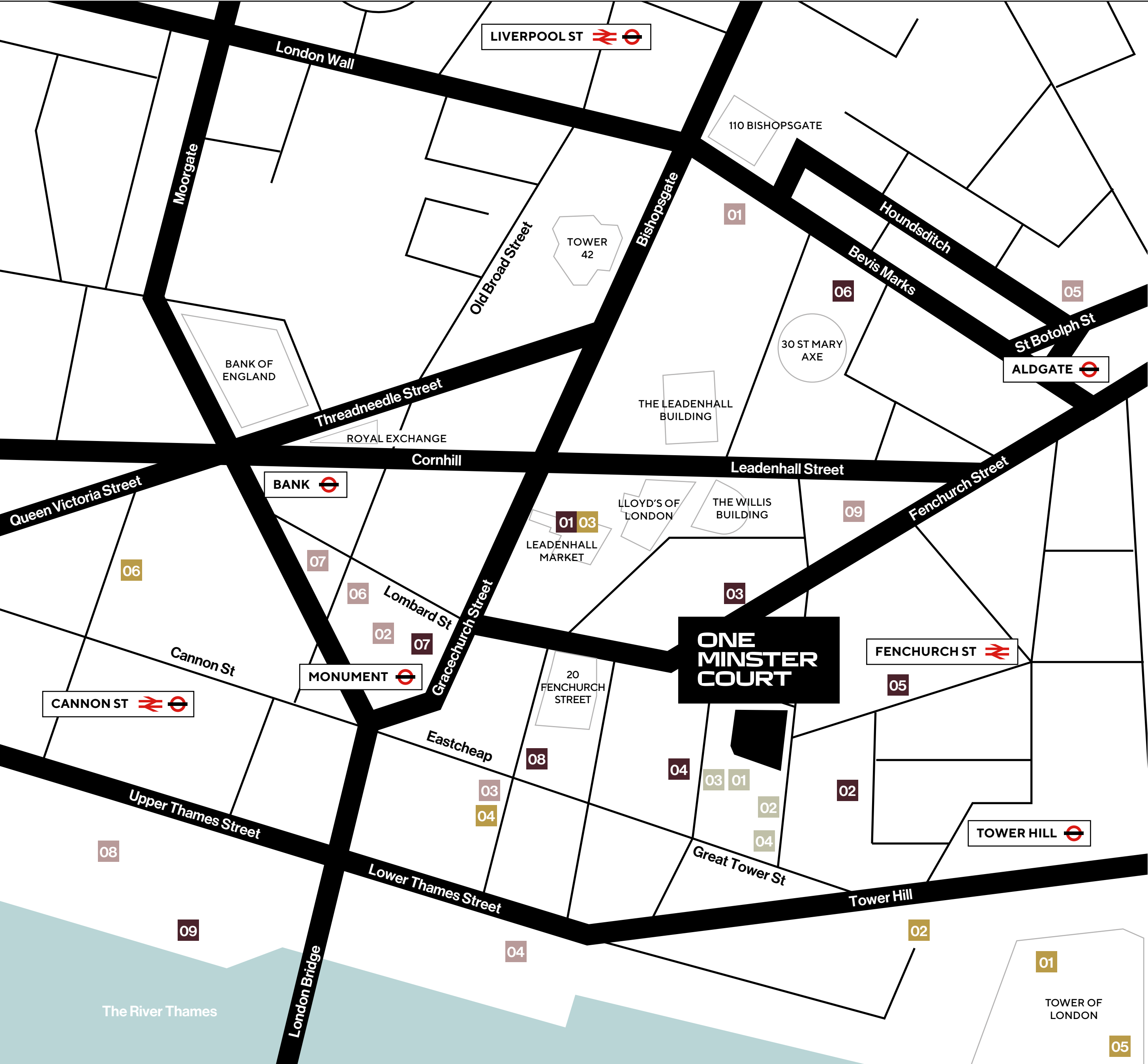


Kirin



Sky Garden





# Make the most of the city.

## At Minster Court

- 01 Balls Brothers
- 02 Third Space City
- 03 Tank & Paddle
- 04 BrewDog Tower Hill

## Dining & Drinking

- 01 Leadenhall Market
- 02 The Lampery
- 03 14 Hills
- 04 Davy's at Plantation Place
- 05 Kirin Japanese Restaurant & Bar
- 06 The Alchemist Bevis Marks
- 07 The Folly
- 08 Blacklock City
- 09 The Oyster Shed

## Wellness & Leisure

- 01 Equinox - Bishopsgate
- 02 Boom Cycle - Monument
- 03 Light Centre - Monument
- 04 The Gym Group - Monument
- 05 PureGym - Aldgate
- 06 The Foundry - Bank
- 07 PureGym - Bank
- 08 Nuffield Health City Fitness & Wellbeing Gym
- 09 Fitness First - Fenchurch Street

## Arts & Culture

- 01 Tower of London
- 02 London Wall
- 03 Leadenhall Market
- 04 Monument to the Great Fire of London
- 05 St Katharine Docks Marina
- 06 London Mithraeum





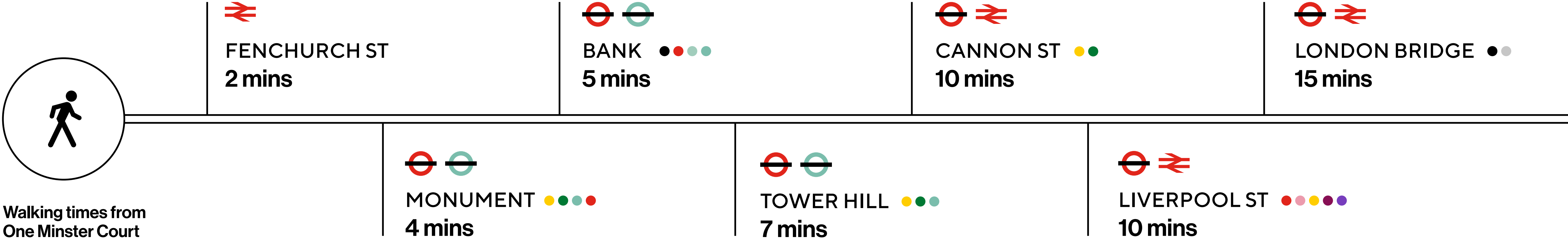
# Did someone say ‘seriously well connected?’

Located in the heart of EC3,  
One Minster Court offers  
an impressive address and  
extensive transport links for  
your business and your team.



# Tube, train, walk or cycle.

A multitude of tube and rail stations, including Fenchurch Street, Bank and Liverpool Street, are all within walking distance, providing access to an impressively wide network of talent all within a 45 minute commute.





# Contact us.

## CBRE

---

**Anna Biggin**

+44 (0) 7931 842 687  
anna.biggin@cbre.com

**Alice Alias**

+44 (0) 7552 882 971  
alice.alias@cbre.com

## Spring4 ■■

---

**Ian Campbell**

+44 (0) 7739 161 054  
icampbell@spring4.com

**Annabel Dickson**

+44 (0) 7547 417 744  
adickson@spring4.com

A development by:



**oneminstercourt.co.uk**